

Year 6

2023-2024



Overview

01



General
Information

02



Curriculum
Topics

03



SATs

04



Other
Information

Teachers

6B

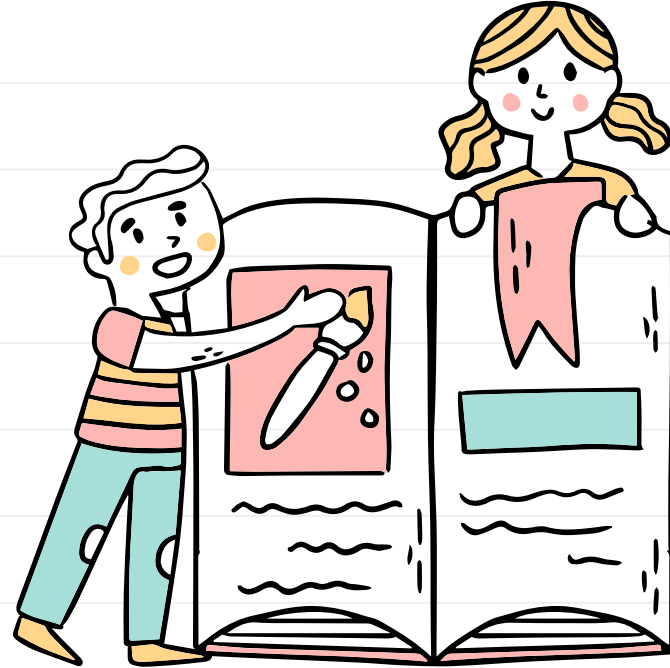
Mrs Bhudia (Mon, Tues, Thurs, Fri)
Mrs Chandarana

6K

Mr Karaiskos
Mrs Kody

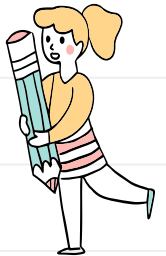
Mr Smith (covers 6B on Wednesday)
Mrs Ganiwalla

Group Teacher
Mrs Anwer



Home Learning

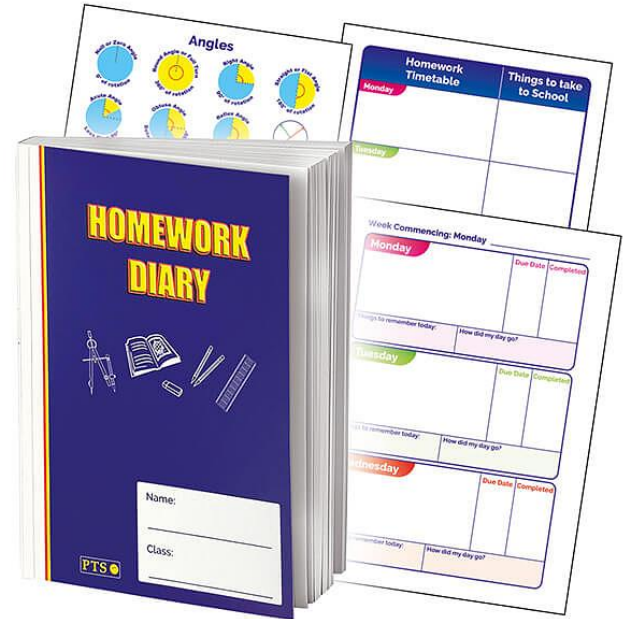
Subject	Given	Due
Maths	Friday weekly	Tuesday weekly
English: SPaG/English groups/ Comprehension	Friday weekly	Tuesday weekly
Science/Topic	As and when	As and when
Spellings	Beginning of term	Friday weekly
SATs Bootcamp	Weekly	Tuesday weekly



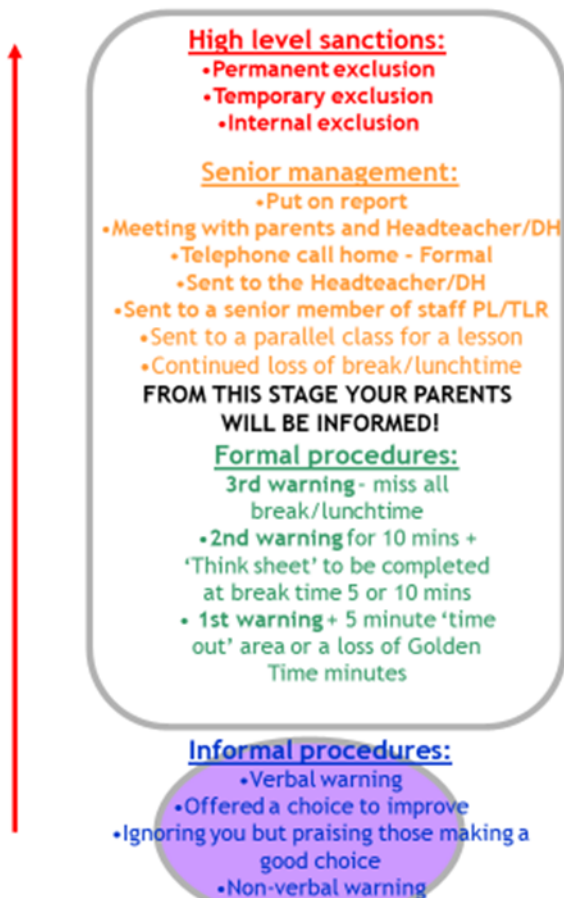
Home Learning Diary

Every child in Year 6 will be given a Homework Diary. Home Learning will be given on a regular basis to prepare them for secondary school.

Home Learning books will be issued for this purpose. Parents should check that Home Learning is being completed.



Behaviour Thermometer



* Stages may be bypassed during a serious incident

SATs 2023-2024

The Key Stage 2 tests are timetabled from Monday 13 May to Thursday 16 May 2024.

Date (Possible Timetable)	Test
Monday 13 th May	English SPaG papers 1&2
Tuesday 14 th May	English Reading
Wednesday 15 th May	Mathematics Paper 1 & 2
Thursday 16 th May	Mathematics Paper 3

To help your child, please:

- Don't book a holiday over this period!
- Ensure your child completes any Home Learning.
- Read with your child regularly and help them learn their times tables.
- We will provide revision packs over the holiday period prior to the SATs.
- Take into account your child's well-being.

English Texts

Kensuke's Kingdom

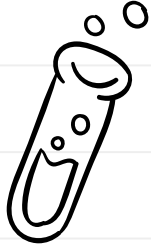
Letters from the Lighthouse

World War I Poetry

World War II Poetry



Science



Living things and their habitats

Animals including humans

Evolution and Inheritance



Light

Electricity

History & Geography

History



World War I

World War II

Kingdom of Benin

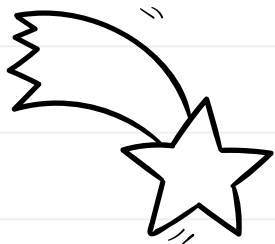
Geography

Natural disasters & climate change

Economics, resources & trade

North & South America





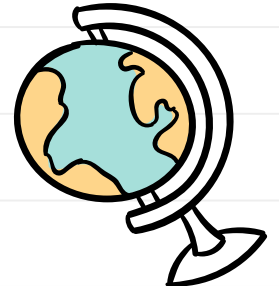
SATs Bootcamp

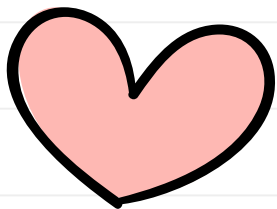
- Online for children to use to help with their SATs.
- Encourage your child to use SATs Bootcamp regularly.
- It is important that they do not sit and struggle with a new topic but use this as revision for topics that have been covered in class.
- For the time being, children should complete 2 tasks per week on SATs Bootcamp as part of their Home Learning. This will be checked weekly by class teachers.



Extra Information

- The children are in mixed groups for English and ability groups for Maths.
- Children are to wait at the front of the school (by the entrance to the office) at the beginning of the school day. They will be released here at the end of day.
- Children should be reading daily and bringing in their Reading Records.
- Children need to log into Purple Mash and Times Table Rockstars and complete activities.
- All policies are available on the school website including the calculation policy.





Special Educational Needs at Roxeth Primary

Information for parents and carers

What is a Special Educational Need?

- These range from child to child.
- Some children may find some aspects of learning challenging, this does not necessarily mean they have a Special Educational Need – everyone is different!
- Types of Special Educational Needs and Disabilities, where a child's educational progress is adversely affected, come under 4 umbrella terms:
 - - Cognition and Learning (Understanding and applying learning)
 - - Communication and Interaction (Speech and Language, interacting with others)
 - - Social, Emotional and Mental Health (Emotional wellbeing, challenges with social interaction)
 - - Physical and Sensory (Physical impairments, and sensory linked behaviours)

What do I do if I am worried my child has difficulties with their learning, or a Special Educational Need/Disability?

- First port of call is to speak to your child's teacher
- They will provide feedback about your child's learning and development, and share any concerns. Where concerns are shared, they will begin an Assess-Plan-Do-Review process, where they will assess your child's challenges, plan how to address these, implement strategies, and review progress.
- If needed, they will raise a concern with the SENDCO – Mrs Ojo.
- If concerns persist after in-class strategies have been applied, the SENCO will begin an Assess-Plan-Do-Review cycle and provide further advice/take further actions with external agencies.
- Roxeth works closely with Speech and Language therapists, The Autism Advisory Service, Educational Psychologists, and many other agencies.
- If there is something you wish to speak directly to the SENDCO about, please book an appointment to see Mrs Ojo at the office.

Children on the SEND register

- Where we feel your child may have a learning need, we will inform you that we have placed your child on our SEND register. This allows us to create targeted support plans for your child.
- **For those who are already on the SEND register:**
- This year, we aim to have Support Planning Meetings in person with parents/carers, where targets will be provided and information/understanding about your child will be shared between both yourselves, and the teacher.
- We understand that as parents/carers, YOU know your child best, and we value any input you can provide for us to better help them.

Where to find information

- Our school website has the SEND Information pack and SEND policy available. These will be updated by January 2024
- www.roxethschoolharrow.org
- You can access information about Harrow's Local offer, which provides information and advice on the website:
- www.harrowlocaloffer.co.uk